

Innovation. Quality. Solutions.

Flute[®] 50 EW

FUNGICIDE

Unique chemistry for powdery mildew programs

Flute contains 50 g/L cyflufenamid (MOA Group U6)

Flute has a Unique Mode of Action

Flute[®] 50 EW is an exciting fungicide with registration in Australia for the control of powdery mildew in cucurbits. With a unique mode of action (GROUP U6), Flute provides effective disease control.

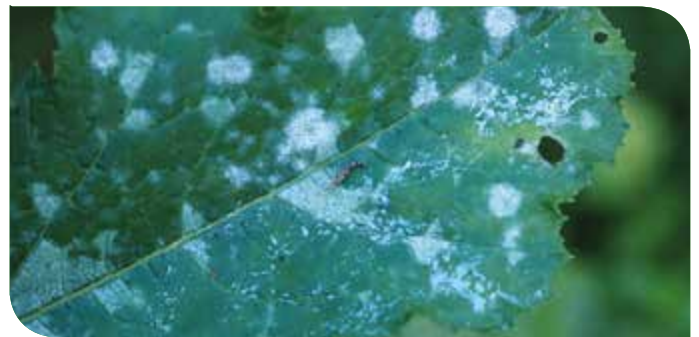
Flute:

- Is highly effective at low use rates.
- Controls powdery mildew strains resistant to other fungicide groups.
- Has translaminar and vapour action which improves performance in dense canopies.
- Is the only fungicide in the U6 mode of action group.
- Is an EW (emulsion, oil in water) formulation for a high level of crop safety even in high temperatures.

A Short 1 Day Withholding Period in Cucurbits

Flute has a low use rate and excellent environmental profile when used as directed. Growers can apply the product up to 1 day before harvest which allows the flexibility to pick at short notice in response to market opportunities.

Flute has Proven Performance in Cucurbits

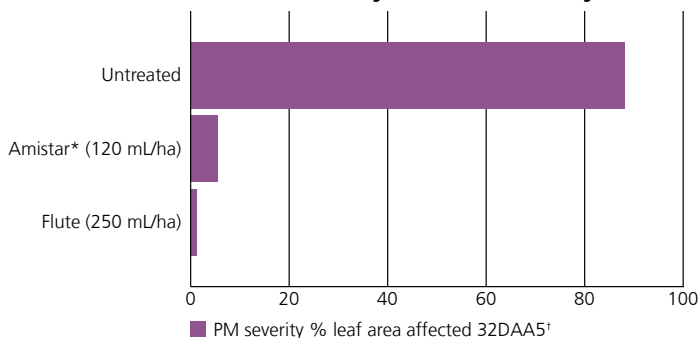


Powdery mildew infection on the top surface of a cucurbit leaf.



Powdery mildew infection on the underside of a cucurbit leaf.

Powdery Mildew Severity

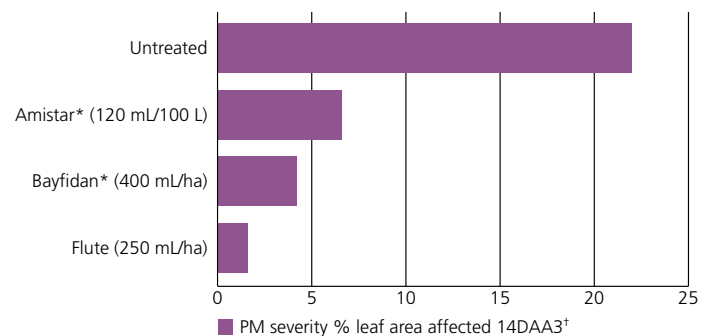


Zucchini, Powdery Mildew trial results.

Forth, Tasmania, 2009.

† = days after application.

Powdery Mildew Severity



Watermelon, Powdery Mildew trial results.

Bowen, Queensland, 2010.

† = days after application.

Innovation. Quality. Solutions.

Flute[®] 50 EW FUNGICIDE

Directions for Use Table

The following is an extract of the product label and does not constitute the complete directions for use. The product label should be read thoroughly before opening the packaging.

CROP	DISEASE	RATE	WHP	CRITICAL COMMENTS
Cucurbits	Powdery mildew (<i>Podosphaera xanthii</i>)	250 mL/ha or <i>Glasshouse:</i> 25 mL/100 L	1 day	Apply before first sign of disease or when conditions are conducive to disease development as part of a disease management program. Apply sprays at 7 to 10 day intervals. Use the shorter intervals under conditions favouring disease infection. <i>Glasshouse:</i> To ensure thorough spray coverage of the target crop, apply to the point of run-off. The required dilute spray volume will change and the sprayer setup and operation may also need to be changed, as the crop grows. For resistance management: Do not apply Flute 50 EW as consecutive sprays or apply more than 2 sprays per crop.

Application

Field Grown Cucurbits: Flute should be applied through a calibrated boom spray to ensure thorough, even coverage. Choose nozzle types and pressures to deliver a MEDIUM size droplet according to ASAE specifications. Use a minimum water volume of 250 L/ha at the early stages of the crop and increase water volumes as the crop develops to ensure that coverage is maintained.

Glasshouse Cucurbits: Flute should be applied evenly as a dilute spray to the point of run-off.

Rainfastness

Do NOT apply Flute if spray irrigation or rainfall is expected within two hours of application.

Compatibility

Flute has demonstrated physical compatibility with a wide range of commonly used insecticides and fungicides, however not all products have yet been tested. For updated information please refer to agnova.com.au

Timing

Flute should be applied as part of a protectant fungicide program before disease symptoms are visible. Follow a Flute application with a fungicide from a different mode of action in accordance with the label directions of that fungicide. Apply a second Flute treatment after the alternative fungicide and before disease symptoms re-appear.

Fungicide Resistance Strategy

Flute applications should be limited to two non-consecutive applications per crop. This is consistent with the CropLife Australia resistance management guidelines to reduce the risk of fungicide resistance developing.

Safety to Beneficials

Flute has not shown any adverse effects to bees, green lacewing, ladybeetles, Orius, parasitic wasps (*Aphidius* spp. and *Trichogramma* spp.) and predatory mites (*Persimilis* spp.) in Australia. This confirms the results of trial work conducted overseas on beneficial species.

The information provided herein may include extracts from the product label and does not constitute the complete directions for use. READ THE PRODUCT LABEL THOROUGHLY BEFORE OPENING OR USING FLUTE

AgNova Technologies Pty Ltd
ABN 70 097 705 158
PO Box 2069 Box Hill North
Victoria 3129 Australia
Ph 03 9899 8100

Data referred to herein were generated using products and rates that were registered at the time. Always read and follow product labels. AgNova Technologies Pty Ltd shall not be liable for any consequential or other loss or damage relating to the supply or subsequent handling or use of this product, unless such liability by law cannot be lawfully excluded or limited. All warranties, conditions or rights implied by statute or other law which may be lawfully excluded are so excluded. Where the liability of AgNova Technologies Pty Ltd for breach of any such statutory warranties and conditions cannot be lawfully excluded but may be limited to it re-supplying the product or an equivalent product or the cost of a product or an equivalent product, then the liability of AgNova Technologies Pty Ltd for any breach of such statutory warranty or condition is so limited.

© Copyright AgNova Technologies 2018. FLUCUC191022

© Flute is a registered trademark of Nippon Soda Co Ltd.

*Amistar and Bayfidan are registered trademarks.